

AKA: N-BOMB, NBOME,  
BOM-25, 2C-I-NBOME,  
25-I-NBOME, 25I, PANDORA,  
SOLARIS, NEW PSYCHOACTIVE  
SUBSTANCES (NSPS), NBOME,  
PHENETHYLAMINES, PSYCHEDELICS

# NBOMes



This resource is produced by Hi-Ground

In an unregulated market it's impossible to know the purity or dose of any substance, educate yourself and practice harm reduction to reduce this risk.

For more information visit:

[www.hi-ground.org](http://www.hi-ground.org)

Hi-Ground is a program of QuIVAA

**Hi-Ground**

The NBOMe-type hallucinogens (referred to generically as NBOMe) are a series of potent serotonin agonists related to the 2C-(x) series of phenethylamines. The most frequently reported drugs from this group are 25I-NBOMe, 25B-NBOMe, and 25C-NBOMe. Since their introduction in the early 2010s, numerous reports have been published on clinical intoxications and fatalities resulting from the consumption of NBOMe compounds. NBOMes have been sold as an alternative to LSD or as LSD due to the very potent psychedelic activity. Thus, users may accidentally ingest NBOMe as counterfeited LSD or MDMA. Users may find that LSD has a slight metallic taste or no taste at all, while 25I-NBOMe will have a bitter taste. The most common NBOMe chemicals in circulation in Australia include: 25B-NBOMe, 25C-NBOMe and 25I-NBOMe.

**COMPOUND:** N-methoxybenzyl or 25X-NBOMe

## ADMINISTRATION

The drugs are sold as blotter papers, or in powder, liquid, or tablet form, and they are administered sublingually/buccally, intravenously, via nasal insufflations, or by smoking.

### 25B-NBOMe SUBLINGUAL INSUFFLATION

<b>ONSET</b>	20-40MIN	2-5MIN
<b>DURATION</b>	8-12HRS	8-12HRS
<b>AFTER EFFECTS</b>	2-6HRS	2-6HRS

### 25C-NBOMe SUBLINGUAL

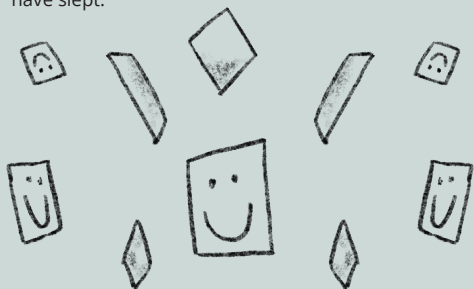
<b>ONSET</b>	45-90MIN
<b>DURATION</b>	4-10HRS
<b>AFTER EFFECTS</b>	1-24HRS

### 25I-NBOMe SUBLINGUAL

<b>ONSET</b>	45-90MIN
<b>DURATION</b>	5-10HRS
<b>AFTER EFFECTS</b>	6-24HRS

## HALF LIFE

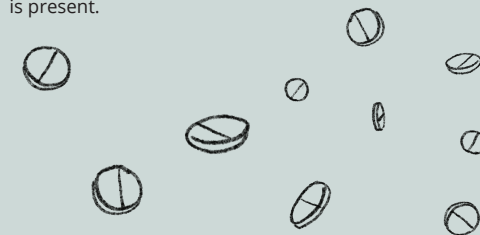
Although the effects may seem to have worn off after 8 hours, the drug is still active in your system for another 5 hours and effects may linger until you have slept.



## DRUG TESTS

**Roadside Police:** NBOMes are not detectable by a saliva test. It is illegal to drive under the influence of any illicit drugs, including NBOMes and any driver may be subject to a roadside behavioural impairment test. Wait at least 24-48 hours before driving.

**Reagent Testing:** Lab-quality testing for detecting NBOMes is recommended for best results and is available in Canberra (ACT) and in Brisbane & Gold Coast (QLD). If you are testing a substance sold as LSD an Ehrlich's reagent turns purple in the presence of a class of drugs called "indoles," which includes substances like LSD, psilocybin, DMT, and more. If Ehrlich's does not turn purple, it means that no LSD is present.



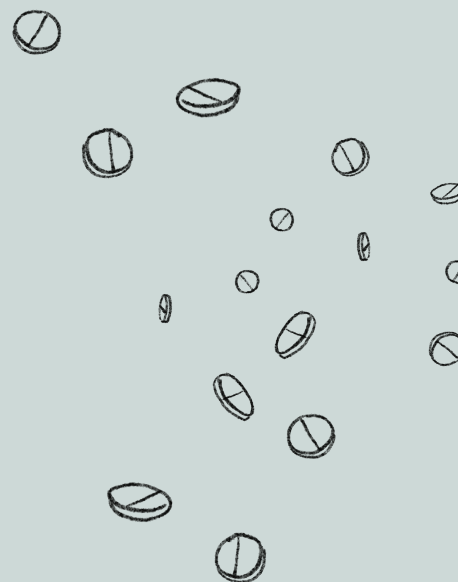
## EFFECTS

NBOMes such as 25I-NBOMe produces visual effects like LSD, but unlike LSD, 25I has an unpredictable safety profile and seemingly random negative effects. Refer to LSD flyer for effects of LSD. Reported NBOMe effects:

- Intense visual hallucinations
- Auditory hallucinations
- Distortion of perceptions of reality
- Distortions of time
- Synesthesia (Seeing sounds, tasting colours etc)
- Itching or tingling sensations
- Nausea and vomiting
- Seizures
- While the hallucinations can be enjoyable, funny and even profound, there is a risk that users will experience disturbing and frightening hallucinations and lose touch with reality
- Confusion/ anxiety/ 'bad trip' reaction.
- Vasoconstriction (constriction of blood vessels)
- Symptoms of serotonin toxicity (eg. heavy sweating, confusion, rapid heart rate and high blood pressure, fever, dilated pupils, seizures, unconsciousness)
- Rhabdomyolysis (a breakdown of muscle tissue that releases a damaging protein into the blood, can be fatal or result in permanent disability).

## SAFER USING & DOSING

- Active doses start at around 200 micrograms. This is too small a dose to "eye ball". If unsure of the dosage, start with a tiny amount, and wait 60-90 minutes minimum.
- Avoid using other substances in conjunction with NBOMe, particularly stimulants like methamphetamine and MDMA
- Avoid snorting NBOMe. NBOMe on blotter is designed to be used sublingually, while NBOMe in tablet form is designed for oral administration
- When snorted, NBOMe-dtype hallucinogens have amplified effects. There have been several overdoses and fatalities in Australia related to NBOMe that has been snorted.
- Have a sober person on hand who can assist if someone has a difficult experience or physical side effects.
- Bad trip reactions caused by NBOMe can be severe, and may not successfully managed by the usual techniques used with classic psychedelics.
- If someone has a difficult experience, consider how to best keep the person safe. Seek urgent medical attention if a person cannot be calmed, or is extremely delirious and unaware of their surroundings.
- Seek urgent medical attention in the event of a seizure
- Any adverse reaction to a suspected NBOMe substance should be treated as a possible medical emergency.



25B-NBOMe	Oral (µg)	Snorted (µg)
<b>THRESHOLD</b>	100	50
<b>LIGHT</b>	100-300	50-200
<b>COMMON</b>	350-500	200-350
<b>STRONG</b>	500-700+	350-500+

25C-NBOMe	Oral (µg)
<b>THRESHOLD</b>	50-250
<b>LIGHT</b>	250-500
<b>COMMON</b>	500-750
<b>STRONG</b>	750-1250+

25I-NBOMe	Oral (µg)
<b>THRESHOLD</b>	50-250
<b>LIGHT</b>	200-500
<b>COMMON</b>	500-750
<b>STRONG</b>	700-1000+

References: <https://www.ncbi.nlm.nih.gov/pmc/articles/PMC7054380/>